

OSCOO ON900A SSD for MacBook – Installation Guide

— The memory & storage experts



Introduction

Compatible Table	01-01
Checking Mac Model and System Version	01-02
Create a Bootable USB Drive	02-03
SSD Installation Steps	03-04
macOS Internet Recovery - Detailed Guide	04-07
Q&A	07-08
MacBook Hibernation Issues	08-09
iMac Hibernation Issues	09-09
Additional Troubleshooting	09-09
Support and Contact Information	09-09

* Thanks for choosing OSC00 ON900A SSD.

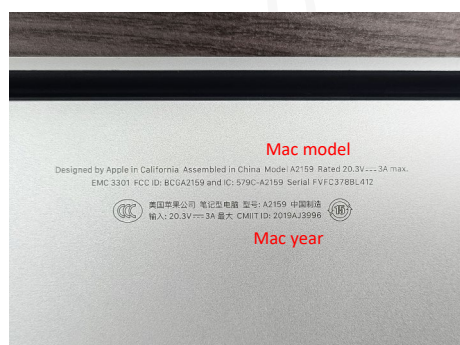
Please read the instructions carefully before use. You are recommended to keep the manual for future use.

Compatibility Table

Name	Size	Year	Model
Macbook Air	11 inch	Mid 2013	A1465
		Early 2014	
		Early 2015	
	13 inch	Mid 2013	A1466
		Early 2014	
		Early 2015 2017	
Macbook Pro (Retina)	13 inch	Late 2013	A1502
		Mid2014	
		Early 2015	
	15 inch	Late 2013	A1398
		Mid 2014	
		Mid 2015	
Mac mini	/	Late 2014	A1347
Mac Pro	/	Late 2013	A1481
iMac	21.5 inch	Late 2013	A1418
		Mid2014	
		Late 2015 2017	
	27 inch	Late 2013	A1419
		Late 2014	
		Mid 2015	
		Late 2015 2017	

* Warm Tip: please make sure your system is MacOS High Sierra10.13 (orlater MacOS) before installing new SSD ON900A.

Check Mac Model and System Version

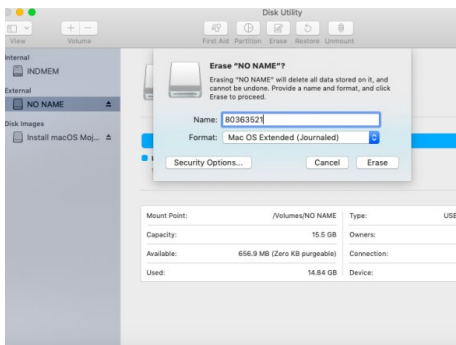


How to check Mac model and year



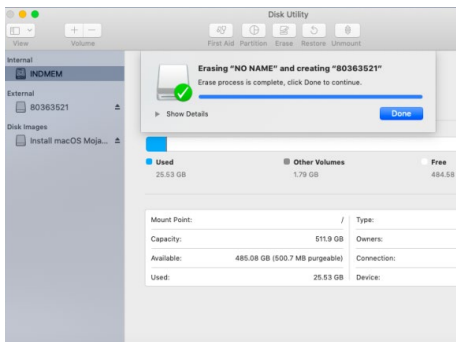
How to check macOS version and Mac model

Create a Bootable USB Drive



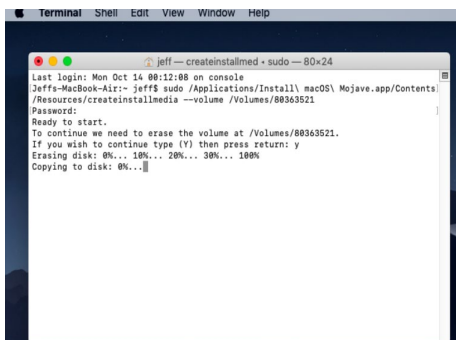
a. Download the latest macOS 10.14.6 installer from the App Store.

Do not install it after downloading — simply quit the installer. The macOS 10.14.6 file will appear in the Applications folder.



b. Prepare a USB drive with at least 8GB of storage that can be erased.

Open Disk Utility, erase the USB drive, name it "80363521", and format it as Mac OS Extended (Journaled). (See example below.)



c. Open the “Terminal” from “Other” in Launchpad and enter the following command:

`sudo /Applications/Install\ macOS\ Mojave.app/Contents/Resources/createinstallmedia --volume /Volumes/80363521`

(You can copy and paste this command.) Then press the Return (Enter) key. You’ll be prompted to enter your administrator password (note: the password won’t be displayed as you type — just type it normally). Press Return after entering the password, then type Y and press Enter again. The Terminal will then display the following process:

```
Terminal Shell Edit View Window Help
jeff -- -bash-- 80x24
Last login: Mon Oct 14 00:12:08 on console
Jeffs-MacBook-Air:~ jeff$ sudo /Applications/Install\ macOS\ Mojave.app/Conte
/Resources/createinstallmedia --volume /Volumes/80363521
Password:
Ready to start.
To continue we need to erase the volume at /Volumes/80363521.
If you wish to continue type (Y) then press return: y
Erasing disk: 0%... 10%... 20%... 30%... 100%
Copying to disk: 0%... 10%... 20%... 30%... 40%... 50%... 60%... 70%... 80%...
0%... 100%
Making disk bootable...
Copying boot files...
Install media now available at "/Volumes/Install macOS Mojave"
Jeffs-MacBook-Air:~ jeff$
```

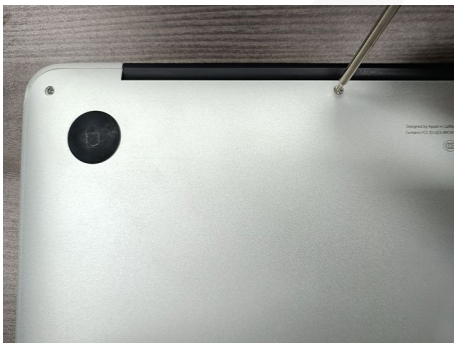
d. When you see the “screenshot below,” it means the creation process is complete.

SSD Installation Steps



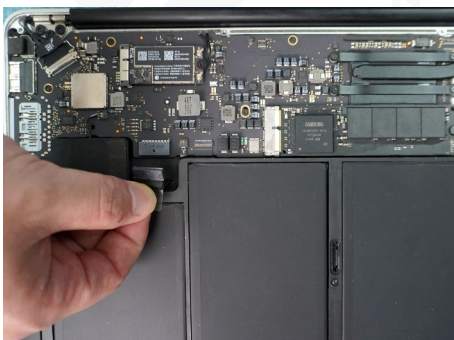
1. Power off, prepare tools, and back up data

- Completely shut down the device, unplug the power cord, and disconnect all external devices to ensure safety.
- Prepare a screwdriver (preferably the included tool) and anti-static gloves (if available) to avoid static damage.
- If your device can still boot, it is recommended to back up important data in advance via **Time Machine** or other tools to prevent data loss during installation.



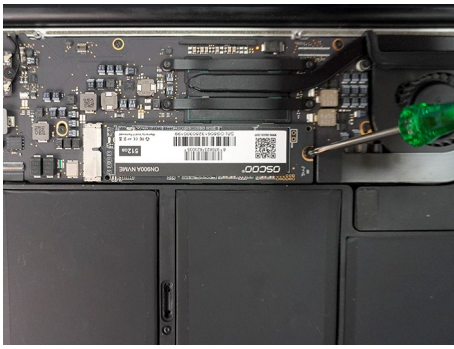
2. Remove the back cover

- Use the included screwdriver to remove the screws on the back of the Mac.
- Carefully take off the back cover and keep the screws safely to avoid losing them.



3. Disconnect power and remove the original hard drive

- First, unplug the power cord to ensure the device is completely powered off.
- Use the screwdriver to remove the screws securing the original hard drive.
- Carefully remove the drive, paying attention to the connector direction and installation position to avoid damaging the interface or motherboard.



4. Install the new SSD

- Align the OSCOO SSD with the slot and insert it.
- Fix it with screws securely. Make sure it is properly installed and screws are tightened.



5. Reattach the back cover

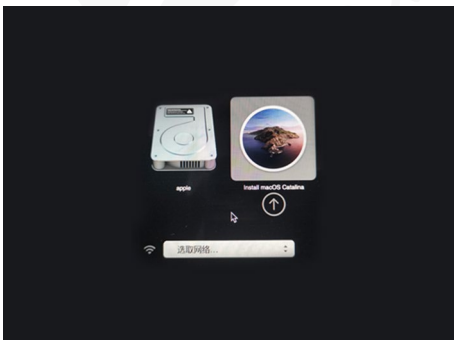
- Put the back cover on and reinstall all screws.
- Ensure all screws are tightened and the cover fits tightly.

Install macOS Using USB Boot Drive



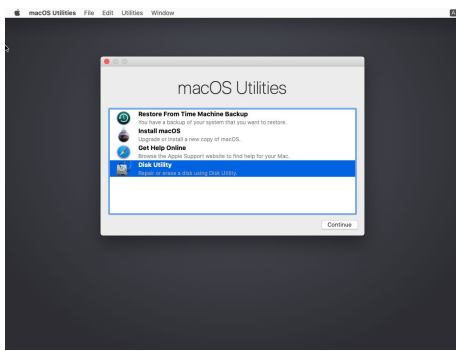
Step 1: Prepare the target Mac

- 1.1 Back up important data (strongly recommend using Time Machine)
- 1.2 Shut down the Mac
- 1.3 Insert the prepared USB drive (which has macOS copied)



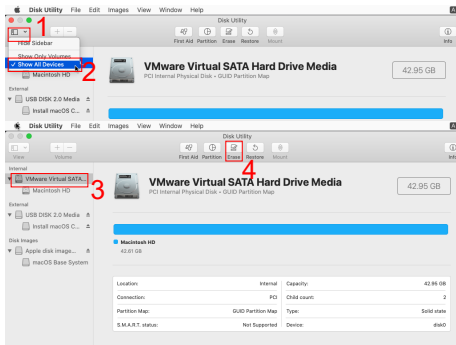
Step 2: Boot from USB

- 2.1 Press the power button to start up
- 2.2 Immediately press and hold the Option key (and keep holding it)
- 2.3 When the Startup Manager screen appears, release the key
- 2.4 Use the arrow keys to select the "Install macOS [version name]" icon
- 2.5 Press Enter to boot



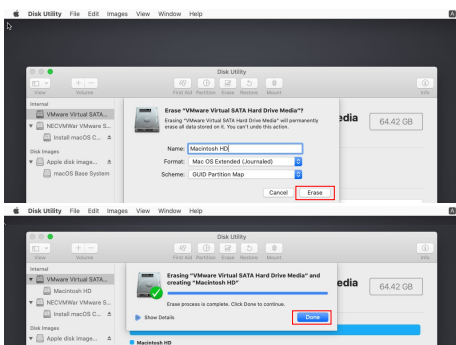
Step 3: Disk Utility (Format the target disk)

3.1 In the "macOS Utilities" window, select "Disk Utility"



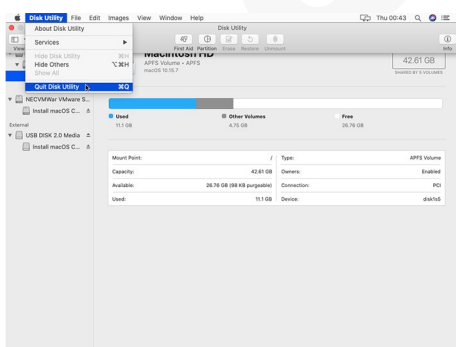
3.2 In Disk Utility (recommended before installation):

- Select "Disk Utility" from "macOS Utilities", Click "view"
- select "show all devices". Click on OSCOO SSD then "erase" it.



3.3 Set:

- Name: Macintosh HD
- Format: APFS (for SSD) or Mac OS Extended (Journaled) (for HDD)
- Scheme: GUID Partition Map
- Click "Erase" to confirm

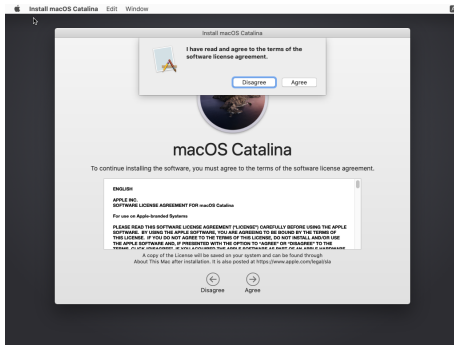


3.4 Click "Disk Utility" > "Quit Disk Utility" to exit Disk Utility

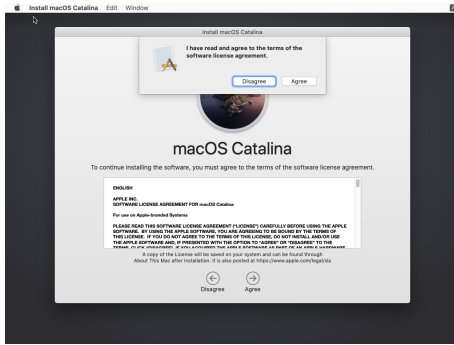


Step 4: Install macOS

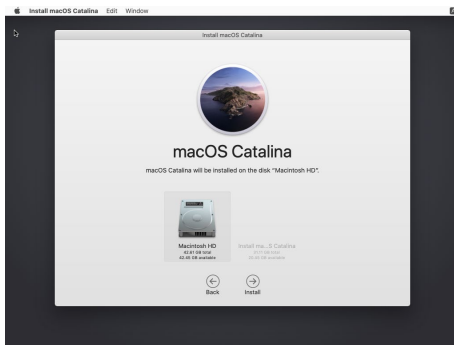
4.1 Click "Install macOS" and then "Continue"



4.2 Click "**Continue**" and agree to the license agreement



4.3 Click "**Agree**"



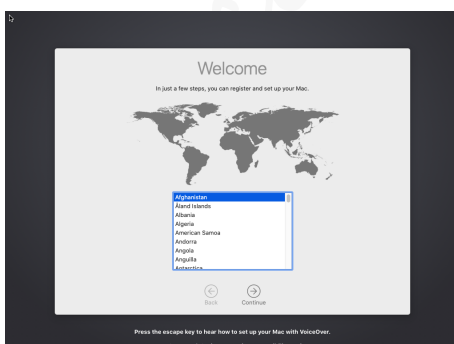
4.4 Select the disk you just erased (Macintosh HD)

4.5 Click "**Install**"



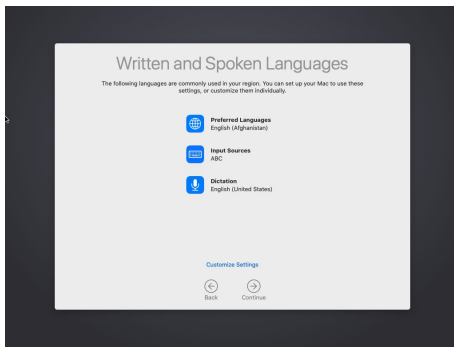
4.6 Wait for installation to complete:

- The system will automatically download the full macOS installer
- This process can take **1–3 hours** depending on network speed and Mac model
- The Mac may restart multiple times automatically



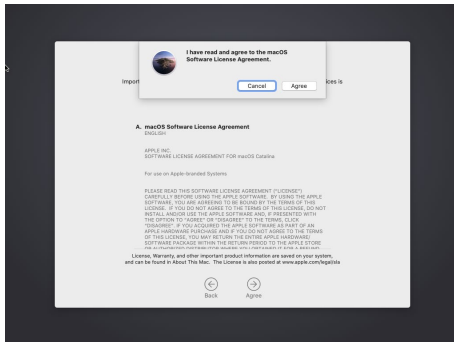
Step 5: Post-installation setup

5.1 Select your country or region



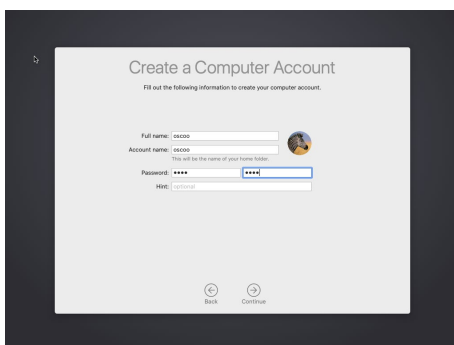
5.2 Set keyboard layout

5.3 Connect to Wi-Fi network



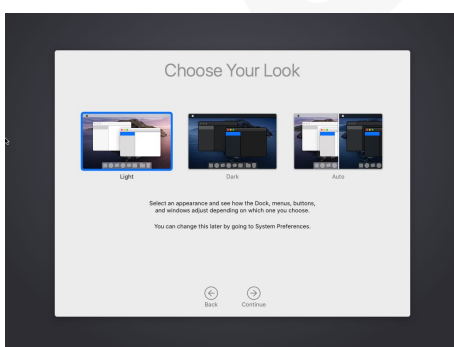
5.4 Choose whether to migrate data:

- Restore from Time Machine backup
- Transfer from another Mac
- If no **"Time Machine backup"**, set up as a new Mac



5.5 Log in with Apple ID (optional)

5.6 Create a user account



5.7 Complete system preferences setup

5.8 The macOS installation process is now complete

Q&A

Q1: Mac doesn't recognize the SSD

A: SSD is not fully inserted into the card slot, or the card slot is loose.
Shut down Mac, take off SSD and push hard insert into card slot again, the head is fully inserted.

Q2: Can't find OSCOO SSD on "Disk Utility"

A1: Forget to click "View", select "Show All Devices"

A2: Mac have not updated to 10.13 or later before original SSD taken off.

Q3: There is no SSD can be selected when installing OS from macOS Utilities.

A1: Have not format the new SSD before installing OS. Erase (format) new SSD from Disk Utility.

A2: Selected incorrect format & scheme type when erasing SSD. Format again the SSD with correct type.

Q4: Use USB bootable installer, after formatting SSD, prompt installer is damaged when install OS.

A: This is not necessarily true installation file corruption. Apple sets barriers to prevent successful use of third-party SSDs. Here are solutions to fix it.

- 1) Make another version OS installer and try to install again.
- 2) Use another Apple ID to make bootable installer and try to install again.

Q5: Use USB bootable installer, when the installation is ready complete, prompt installer is damaged.

A: Before making USB installer, if copy already downloaded installer from other Mac, or copy other USB installer without making process may cause this problem. Needs to delete installer that has downloaded on Mac, make the USB bootable installer again.

Q6: There may be an issue with a storage device, reference code:VDH002.

Try the following solutions

A1: Try to do an SMC and NVRAM reset.

Reset NVRAM: Command-Option-P-R Press immediately after booting.

Reset SMC: Please Google or learn from Apple support.

A2: Maybe the system lost important DATA when making Time Machine Backup or USB bootable installer. Probably the USB drive is with bad sectors.

A3: Try to reinstall OS via Internet Recovery.

Q7: Erase button shows grey, SSD can't be formatted.

A: 3 reasons

- 1) Slot is loose. Reinsert SSD again.
- 2) USB bootable installer or time machine backup damaged. Restart to into Disk Utility again. If still so, remake installer/backup again.
- 3) Something wrong with SSD. Get a new one to try again.

Q8: How do I know if the DMPG3N SSD is dead?

A: All our items will be tested before factory shipment. Rare chance of damage due to shipping. But if you still want to confirm it is working or not, you can open Mac case to check after installing SSD into card slot. When starting Mac, if the indicator light on the board of SSD is blinking, that it works. If no lights, maybe it dead.

(Make sure card slot can work, if not, SSD will not blinking)

MacBook Hibernation problems

Mac will crash, self restart waking from sleeping. This is a known issue that occurs when using NVMe SSDs with MacBooks from 2013 and 2014. The problem exists with every NVMe SSD, even Apple, even owc aura Pro 2, even Transcend 850 NVMe SSDs...

This problem is related to the NVMe DXE driver in the bootrom of the 2013-2014 PCIe 2x lane MacBooks.

However, you can circumvent this issue using the following steps!

This will still allow for regular sleep, just not deep "hibernation" mode.

1) Open up Termina (open your Applications folder, then open the Utilities folder. Open the Terminal application.)

Type in the following code in the Terminal:

```
sudo pmset hibernatemode 0 standby 0
```

Press enter (return).

If that didn't work, try to do the following:

2) Open up Terminal (open your Applications folder, then open the Utilities folder. Open the Terminal application.)

Type in the following code in the Terminal:

```
sudo pmset autopoweroff 0
```

Press enter (return).

iMac Hibernation problems

The iMacs before 2017 have issues with the drive's power states after upgrading the blade SSD with a non-Apple NVMe. The late 2013, late 2014, mid 2015 iMacs with PCIe 2x lane SSD slot will crash when waking from hibernation, self restart with two start-up chimes. The late 2015 iMac will either "restart because of a problem", or show a folder with question mark icon (depending on the system event produced).

Until Apple patches the bootrom with the full NVMe driver that 2017 and 2019 iMac models have, the only way to prevent your iMac from crashing is type the following command in Terminal:

(open your Applications folder, then open the Utilities folder. Open the Terminal application.)

For Late 2015 iMacs (disabling normal sleep):

```
sudo pmset -a hibernatemode 25 standby 0
```

For Late 2013 until Mid 2015 iMacs (disabling hibernation):

```
sudo pmset -a hibernatemode 0 standby 0 autopoweroff 0
```

(for the models in late 2013, late 2014, mid 2015, alternatively, instead of standby 0, you can leave the standby at 1, and use for example standbydelayhigh 2592000 which equals to one month in seconds)

Additional Troubleshooting

Issue 1: USB installer not recognized

Make sure the USB drive is properly formatted and the installer was correctly created.

Try using a different USB port (especially a USB 2.0 port).

Unplug and reinsert the USB drive.

Check if the USB drive is physically damaged.

Issue 2: Installation process is stuck

Be patient — some steps may take a long time.

Ensure your Mac is connected to a power source.

Try resetting the NVRAM: shut down the Mac, then turn it on and immediately press and hold **Command + Option + P + R**.

OSCOO Customer Service & Technical Support

Contact Information

Shenzhen OSCOO Tech Co., Ltd.

Customer Service Hotline: 400-772-0688

Website: www.oscoo.com

Email: service@oscoo.com

Address: 1-2F, Building 5, Futong HIWIT Sci-Tech Park, No. 17, Bulan Road, Nanwan Street, Longgang District, Shenzhen, Guangdong, China.